



**COMPANY DIRECTORS  
AND MANAGEMENT**

William Hobba  
**Managing Director**

Yongji Duan  
**Chairman**

Josh Hunt  
**Non-Executive Director**

Luke Wang  
**Financial Controller  
Company Secretary**

**27 SEPTEMBER 2022**

**ALPHA WEST RC DRILLING PROGRAM HITS HIGH-GRADE  
GOLD MINERALISATION**

**HIGHLIGHTS**

- **Gold assays reported from the RC drilling at Alpha West, include:**
  - **5m @ 9.8g/t Au from 98m (BTRRC130)**
  - **2m @ 11.3g/t Au from 88m incl. 1m @ 21.4g/t Au from 88m (BTRRC142)**
  - **2m @ 6.18g/t Au from 77m (BTRRC129)**
- **These intersections confirm the high-grade tenor and locations of the mineralised lode compared with the geological model.**
- **The mineralised structure has been identified in the majority of the holes completed in the program.**
- **Results indicate the mineralisation is open at depth and along strike, showing a requirement for further drilling to determine edges of the lode.**

Brightstar Resources Limited (ASX: BTR) (**Brightstar** or the **Company**) is excited to announce assay results from the successful RC drilling program at their Alpha project, located 15kms from the Brightstar processing facility in the Laverton Gold belt of Western Australia. Twelve holes were completed for 1,260m drilled at Alpha West, located 500m to the NW of the main Alpha ore body.

Commenting on the success of the program, Managing Director, Mr Hobba, said: "Brightstar is excited to renew exploration and resource development at Alpha after eight years without significant activities on this project. This first round of drilling shows potential for further extensions of this western zone of the project in an area that has not previously been mined. When combined with potential for growth of the main Alpha lode we are eager to discover the true scale of this mineralised system."

## Discussion of Results

The confirmation of potential for extensions of the mineralisation into the fresh bedrock in this western section of the Alpha system significantly increases the potential for a sizable mineralised position. Further drilling will be required to grow the resource as well as some confirmatory holes to improve the quality of the resource in the eastern part of the system, however it appears from this drilling that it will be possible to develop a larger scale mineralised system than has been previously recognised.

Brightstar expect these results to contribute to a more robust JORC compliant Resource. For the first exploration program conducted on this area since 2014 this is an encouraging outcome. The potential for developing a secondary pit in the Alpha West area is significant for potential mining solutions of the larger resource (secondary access for underground mining, improved trucking routes, installation of other underground infrastructure).

Figure 1 below indicates the drill hole collar locations for the reported holes in this announcement.

## Gold Mineralisation Discussion

As can be seen in the below sections there are significant high-grade intersections below the previously drilled anomalous material. This indicates the potential for considerable growth down-plunge similar to the main Alpha lode to the east. On other sections where the intersections were not as anomalous it is still clear that the structure that carries the grade is present it just is not as mineralised. In this geological setting of higher grade, nuggetty systems, this is quite common. Further drilling is required to determine the factors that influence the variability of mineralisation on the structure however the apparent northerly plunging shoot at Alpha proper is a good initial model for further mineralisation in this system.

The best intersection returned so far is **5m @ 9.8g/t Au from 98m** from BTRRC130.

Table 1 below lists the significant gold intersections received.

Appendix 2 lists the relevant hole details.

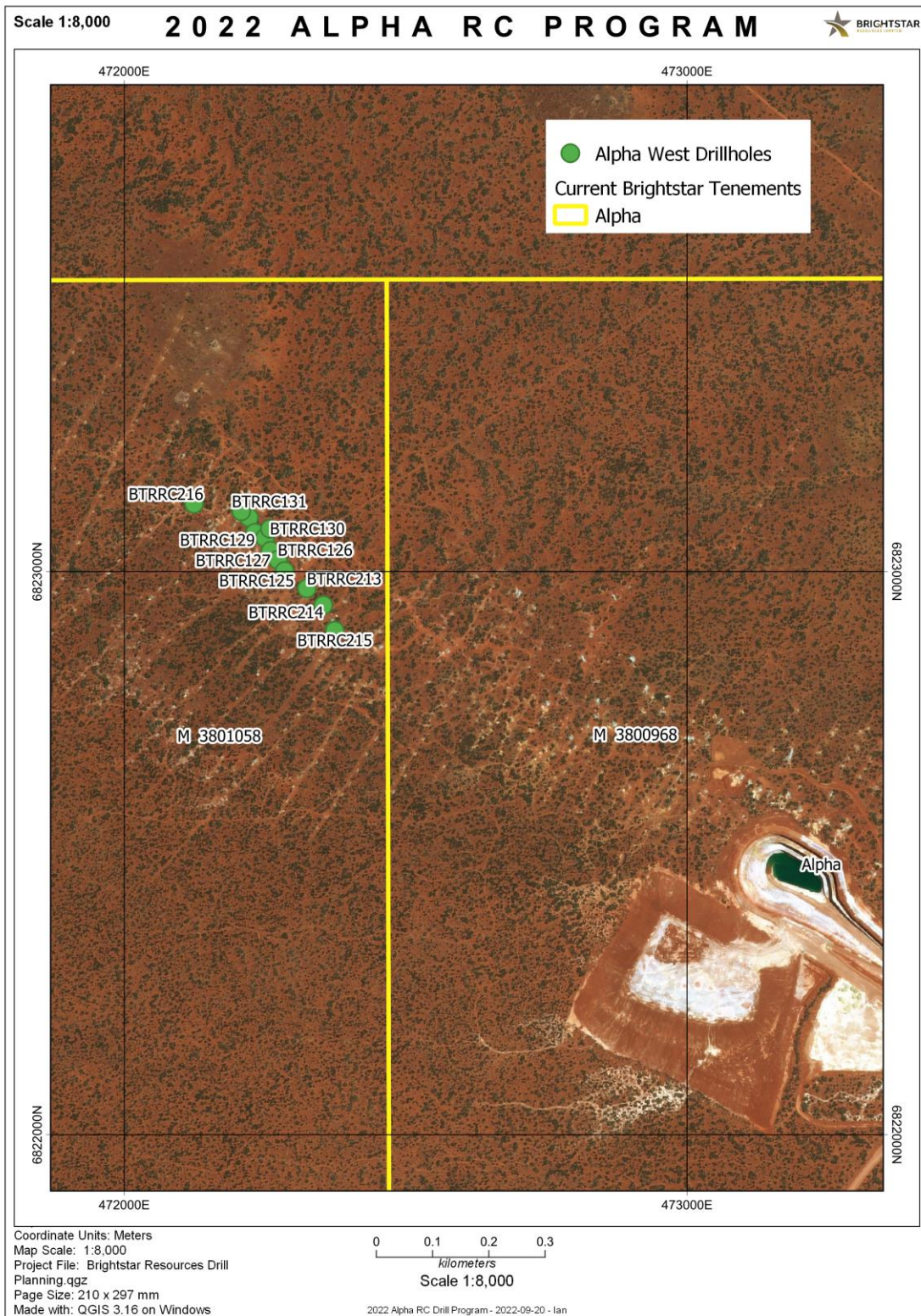


Figure 1: Plan view of Alpha drill collar locations.



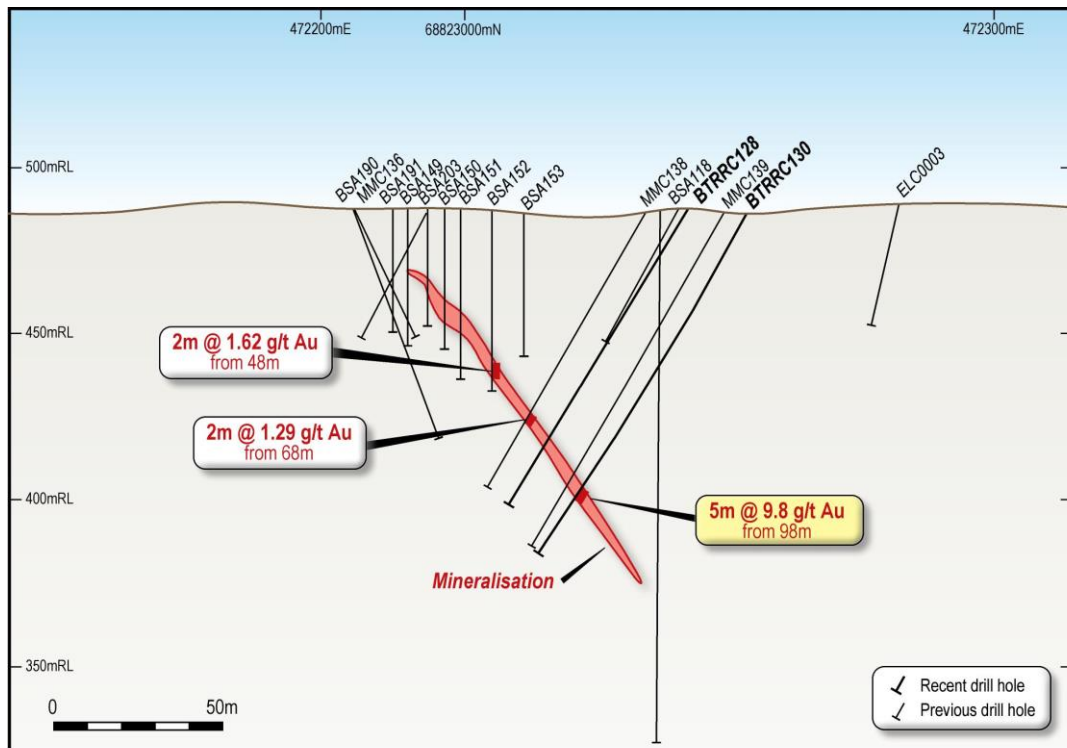


Figure 2: Confirmation of mineralisation in BTRRC130

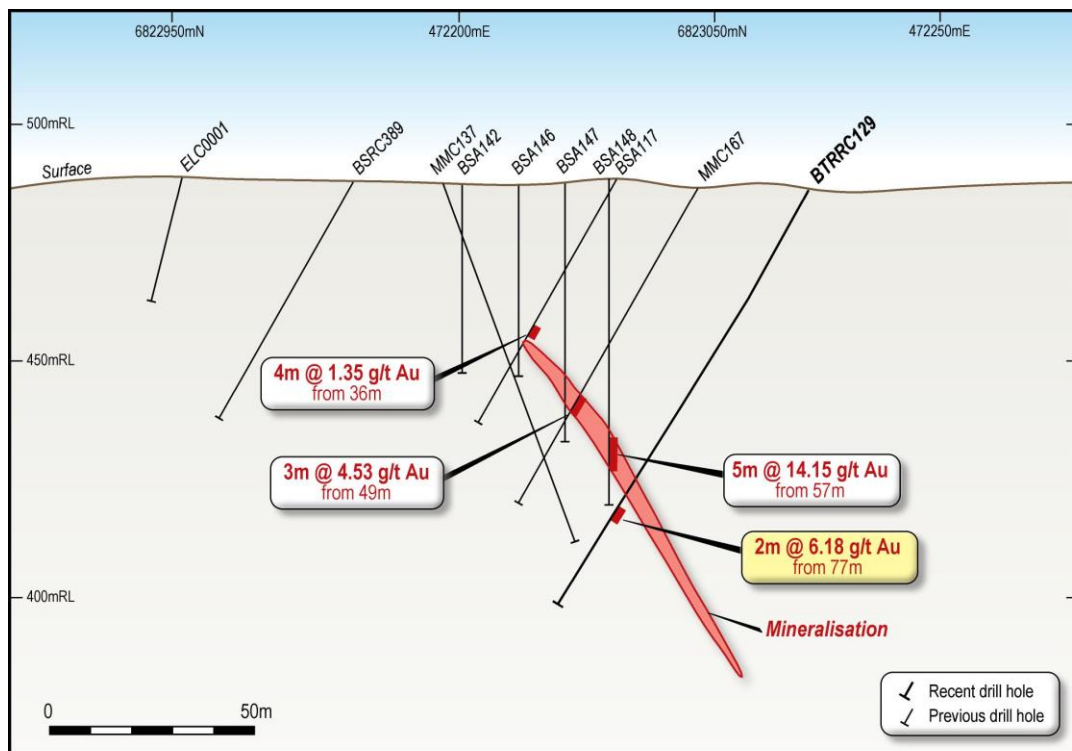


Figure 3: Confirmation of bedrock mineralisation in BTRRC129.

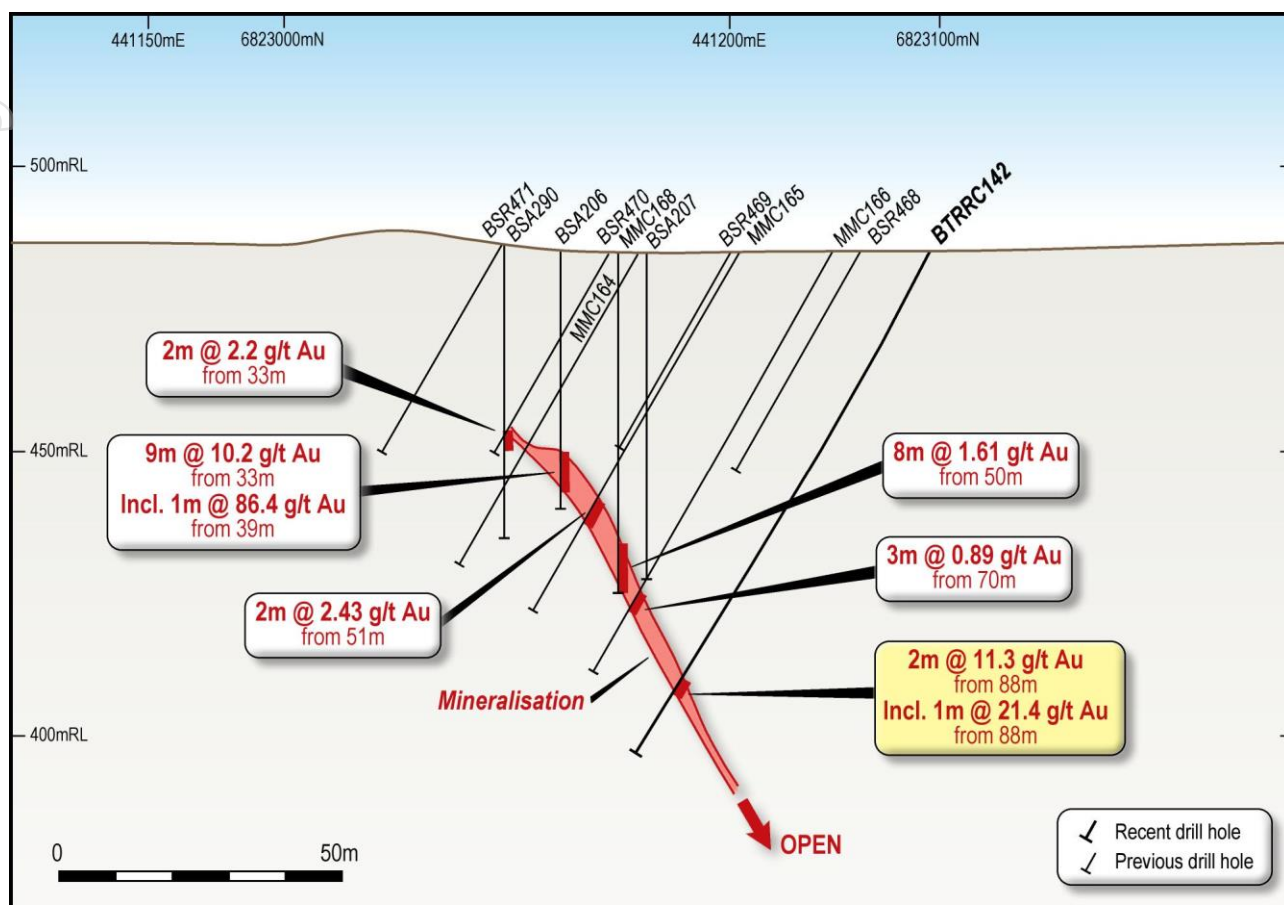


Figure 4: Extension of mineralisation in BTRRC142

Hole Number	From	To	Interval	Grade
BTRRC126	70	73	3	0.88
BTRRC127	69	73	4	1.03
BTRRC129	77	79	2	6.18
BTRRC130	98	103	5	9.8
BTRRC131	89	90	1	1.94
BTRRC142	88	90	2	11.3
BTRRC213	80	82	2	3.31

Table 1: Significant Intercepts (>0.5g/t Au).

The cross section in Figure 4 above demonstrates the opportunity of better intersections down-dip with BTRRC142 returning **2m @ 11.3g/t Au** from 88m. This intersection is significantly better grade than the intersection above it. Potential for growth is also apparent as the section is not closed down-dip.

### Next Steps

Additional drilling for the project is likely to be proposed including extensions down-dip and along strike to determine the size of this system. Drillholes are also planned to improve confidence in the current resource at the main Alpha deposit and allow the development of a robust estimate for forward modelling of mining solutions and scheduling.

This ASX announcement has been approved by the Managing Director on behalf of the board of Brightstar.

For further information, please contact:

#### **William Hobba**

Managing Director

Phone: +61 8 9277 6008

Email: BillH@brightstarresources.com.au

#### **Ian Pegg**

Exploration Manager

Phone: +61 8 9277 6008

Email: IanP@brightstarresources.com.au

### COMPETENT PERSON'S STATEMENT

The information regarding Mineral Resources is extracted from the report entitled 'Auralia Review' created on 10 September 2020 and available to view on the ASX website under the ticker code 'BTR' or on the Brightstar Resources website, <http://www.brightstarresources.com.au/asx-announcements>. The company confirms that it is not aware of any new information or data that materially affects the information included in the original market announcement and, in the case of estimates of Mineral Resources or Ore Reserves, that all material assumptions and technical parameters underpinning the estimates in the relevant market announcement continue to apply and have not materially changed. The company confirms that the form and context in which the Competent Person's findings are presented have not been materially modified from the original market announcement.'

The information presented here relating to exploration of the Brightstar South area is based on information compiled by Mr Ian Pegg B App Sci (Hons), who is a Member of the Australian Institute of Geoscientists (AIG) and has sufficient experience which is relevant to the style of mineralisation and type of deposit under consideration and to the activity he has undertaken to qualify as a "Competent Person" as that term is defined in the 2012 Edition of the "Australasian Code of Reporting of Exploration Results, Mineral Resources and Ore Reserves (JORC Code 2012)". Mr Pegg consents to the inclusion in this announcement of the matters based on his information in the form and context in which it appears. Mr Pegg is employed by Brightstar Resources Ltd.

## Disclaimer

**Nature of this document:** The purpose of this announcement is to provide general information about Brightstar Resources Limited (the 'Company'). Unless otherwise stated herein, the information in this announcement is based on the Company's own information and estimates. In attending this announcement or viewing this document you agree to be bound by the following terms and conditions. This document has been prepared by the Company. Information in this document should be read in conjunction with other announcements made by the Company to the Australian Securities Exchange and available at [www.asx.com](http://www.asx.com).

**Not an offer:** This announcement is for information purposes only and does not constitute or form any part of any offer or invitation to sell or issue, or any solicitation of any offer to purchase or subscribe for, any securities in the Company in any jurisdiction. This announcement and its contents must not be distributed, transmitted or viewed by any person in any jurisdiction where the distribution, transmission or viewing of this document would be unlawful under the securities or other laws of that or any other jurisdiction.

**Not financial product advice:** This announcement does not take into account the individual investment objectives, financial situation and particular needs of each of the Company's shareholders. You may wish to seek independent financial and taxation advice before making any decision in respect of this announcement. The Company nor any of its related bodies corporate is licensed to provide financial product advice in respect of the Company's securities or any other financial products.

**Forward-looking statements:** Certain statements in the announcement are or may be "forward-looking statements" and represent the Company's intentions, projections, expectations or beliefs concerning, among other things, future operating and exploration results or the Company's future performance. These forward looking statements speak, and the announcement generally speaks, only at the date hereof. The projections, estimates and beliefs contained in such forward looking statements necessarily involve known and unknown risks and uncertainties, and are necessarily based on assumptions, which may cause the Company's actual performance, results and achievements in future periods to differ materially from any express or implied estimates or projections. Accordingly, readers are cautioned not to place undue reliance on forward looking statements. Relevant factors which may affect the Company's actual performance, results and achievements include changes in commodity price, foreign exchange fluctuations and general economic conditions, increased costs and demand for production inputs, the speculative nature of exploration and project development, diminishing quantities or grades of reserves, political and social risks, changes to laws and regulations, environmental conditions, and recruitment and retention of personnel.

**Disclaimer:** No reannouncement or warranty, express or implied, is made by the Company that the material contained in this announcement will be achieved or prove to be correct. Except for statutory liability which cannot be excluded, each of the Company, and their respective directors, officers, employees, advisers and agents expressly disclaim any responsibility for the accuracy, fairness, sufficiency or completeness of the material contained in this announcement, or any opinions or beliefs contained in this document, and excludes all liability whatsoever (including in negligence) for any loss or damage which may be suffered by any person as a consequence of any information in this announcement or any error or omission there from. The Company is under no obligation to update or keep current the information contained in this announcement or to correct any inaccuracy or omission which may become apparent, or to furnish any person with any further information. Any opinions expressed in the announcement are subject to change without notice.

**Unverified information:** This announcement may contain information (including information derived from publicly available sources) that has not been independently verified by the Company.

## APPENDIX 1:

### Alpha RC Drill Results (Gold)

Hole Number	From (m)	To (m)	Grade (g/t)	Comments
BTRRC125	No Significant Assays			
BTRRC126	70	73	0.88	
BTRRC127	69	73	1.03	
BTRRC128	No Significant Assays			
BTRRC129	77	79	6.18	
BTRRC130	98	103	9.8	
BTRRC131	89	90	1.94	
BTRRC142	88	90	11.3	
BTRRC213	80	82	3.31	
BTRRC214	No Significant Assays			
BTRRC215	No Significant Assays			
BTRRC216	No Significant Assays			

## APPENDIX 2:

### Completed Alpha RC Holes

Lease No.	Hole Id	Easting	Northing	RL	Dip	Azimuth	End Depth
M38/1058	BTRRC125	472285	6823001	488	-60	210	100
M38/1058	BTRRC126	472273	6823021	487	-60	210	100
M38/1058	BTRRC127	472260	6823037	487	-60	210	100
M38/1058	BTRRC128	472250	6823060	486	-60	210	100
M38/1058	BTRRC129	472232	6823069	485	-60	210	100
M38/1058	BTRRC130	472259	6823076	485	-60	210	120
M38/1058	BTRRC131	472208	6823107	484	-60	210	100
M38/1058	BTRRC142	472222	6823096	485	-60	210	100
M38/1058	BTRRC213	472325	6822970	489	-60	210	120
M38/1058	BTRRC214	472354	6822940	490	-60	210	120
M38/1058	BTRRC215	472374	6822895	488	-60	210	100
M38/1058	BTRRC216	472124	6823120	484	-60	210	100



## APPENDIX 3:

### JORC Code, 2012 Edition – Table 1 – Alpha

## JORC CODE, 2012 EDITION – TABLE 1 REPORT TEMPLATE

### SECTION 1 SAMPLING TECHNIQUES AND DATA

(Criteria in this section apply to all succeeding sections.)

Criteria	JORC Code explanation	Commentary
<b>Sampling techniques</b>	<ul style="list-style-type: none"> <li>Nature and quality of sampling (eg cut channels, random chips, or specific specialised industry standard measurement tools appropriate to the minerals under investigation, such as down hole gamma sondes, or handheld XRF instruments, etc). These examples should not be taken as limiting the broad meaning of sampling.</li> <li>Include reference to measures taken to ensure sample representivity and the appropriate calibration of any measurement tools or systems used.</li> <li>Aspects of the determination of mineralisation that are Material to the Public Report.</li> <li>In cases where 'industry standard' work has been done this would be relatively simple (eg 'reverse circulation drilling was used to obtain 1 m samples from which 3 kg was pulverised to produce a 30 g charge for fire assay'). In other cases more explanation may be required, such as where there is coarse gold that has inherent sampling problems. Unusual commodities or mineralisation types (eg submarine nodules) may warrant disclosure of detailed information.</li> </ul>	<ul style="list-style-type: none"> <li>Reverse circulation drilling was used to obtain 1 m samples from which 3 kg was pulverised to produce a 50 g charge for fire assay.</li> <li>Downhole surveys were taken every thirty meters with an Axis Champ Gyro.</li> </ul>
<b>Drilling techniques</b>	<ul style="list-style-type: none"> <li>Drill type (eg core, reverse circulation, open-hole hammer, rotary air blast, auger, Bangka, sonic, etc) and details (eg core diameter, triple or standard tube, depth of diamond tails, face-sampling bit or other type, whether core is oriented and if so, by what method, etc).</li> </ul>	<ul style="list-style-type: none"> <li>Reverse Circulation with face sampling bit</li> </ul>
<b>Drill sample recovery</b>	<ul style="list-style-type: none"> <li>Method of recording and assessing core and chip sample recoveries and results assessed.</li> <li>Measures taken to maximise sample recovery and ensure representative nature of the samples.</li> <li>Whether a relationship exists between sample recovery and grade and whether sample bias may have occurred due to preferential loss/gain of fine/coarse material.</li> </ul>	<ul style="list-style-type: none"> <li>Drill sample recovery assessed onsite with visual checks.</li> <li>Static Cone splitter used to ensure effective splitting of both dry and wet samples.</li> <li>No indication of a bias from sample recovery vs grade.</li> </ul>
<b>Logging</b>	<ul style="list-style-type: none"> <li>Whether core and chip samples have been geologically and geotechnically logged to a level of detail to support appropriate Mineral Resource estimation, mining studies and metallurgical studies.</li> <li>Whether logging is qualitative or quantitative in nature. Core (or costean, channel, etc) photography.</li> <li>The total length and percentage of the relevant intersections logged.</li> </ul>	<ul style="list-style-type: none"> <li>All meters of the drilling have been logged by a geologist with 25 years experience in Archaean Gold deposit exploration. Brightstar staff log the drillholes to a detailed standard sufficient for Mineral Resource estimation.</li> <li>Database captures collar details, collar metadata, downhole surveys, assays, weathering, lithology, alteration, and veining</li> </ul>
<b>Sub-sampling techniques and sample preparation</b>	<ul style="list-style-type: none"> <li>If core, whether cut or sawn and whether quarter, half or all core taken.</li> <li>If non-core, whether riffled, tube sampled, rotary split, etc and whether sampled wet or dry.</li> <li>For all sample types, the nature, quality and appropriateness of the sample preparation technique.</li> <li>Quality control procedures adopted for all sub-sampling stages to maximise representivity of samples.</li> <li>Measures taken to ensure that the sampling is representative of the in situ material collected, including for instance results for field duplicate/second-half sampling.</li> <li>Whether sample sizes are appropriate to the grain size of the material being sampled.</li> </ul>	<ul style="list-style-type: none"> <li>Split onsite using static cone splitter that effectively splits wet and dry samples.</li> <li>Sent to Jinning Laboratory in Maddington, Perth WA via courier.</li> <li>Samples greater than 3kg riffle split at the laboratory to ensure sub-sample can fit into LM5 pulveriser. A fifty gram charge is then taken for standard Fire Assay analysis with AAS finish.</li> <li>Samples pulverized to &gt;90% passing -75micron</li> <li>Wet sieving of pulps to test percentage passing undertaken on random samples by laboratory to ensure effective pulverization.</li> <li>2 Field duplicates taken per 100 samples on-site to determine if sampling is representative. 3%</li> </ul>

Criteria	JORC Code explanation	Commentary
		<p>standards inserted to check on precision of laboratory results.</p> <ul style="list-style-type: none"> <li>Grain size is relatively small in all intersected materials therefore the 3kg sample size should be representative of the metre samples taken.</li> </ul>
Quality of assay data and laboratory tests	<ul style="list-style-type: none"> <li>The nature, quality and appropriateness of the assaying and laboratory procedures used and whether the technique is considered partial or total.</li> <li>For geophysical tools, spectrometers, handheld XRF instruments, etc, the parameters used in determining the analysis including instrument make and model, reading times, calibrations factors applied and their derivation, etc.</li> <li>Nature of quality control procedures adopted (eg standards, blanks, duplicates, external laboratory checks) and whether acceptable levels of accuracy (ie lack of bias) and precision have been established.</li> </ul>	<ul style="list-style-type: none"> <li>A 50g fire assay with AAS finish is an industry standard for this type of gold orebody. The 50g charge is considered a better sample support compared to a 30g charge however individual pots may be varied depending on mineral content (elevated sulphides etc.)</li> <li>Laboratory QA/QC procedures include the insertion of certified reference 'standards'. Assay results have been satisfactory and demonstrate an acceptable level of accuracy and precision.</li> <li>5 different grade gold Certified Reference Materials from Geostats and Ore Research have been used during the program. Blank sourced from Geostats has also been used every 100 samples.</li> </ul>
Verification of sampling and assaying	<ul style="list-style-type: none"> <li>The verification of significant intersections by either independent or alternative company personnel.</li> <li>The use of twinned holes.</li> <li>Documentation of primary data, data entry procedures, data verification, data storage (physical and electronic) protocols.</li> <li>Discuss any adjustment to assay data.</li> </ul>	<ul style="list-style-type: none"> <li>All drillholes and significant intersections are verified by Company geologists.</li> <li>No twinned holes are included in this dataset.</li> <li>No adjustments have been made to the assay dataset.</li> </ul>
Location of data points	<ul style="list-style-type: none"> <li>Accuracy and quality of surveys used to locate drill holes (collar and down-hole surveys), trenches, mine workings and other locations used in Mineral Resource estimation.</li> <li>Specification of the grid system used.</li> <li>Quality and adequacy of topographic control.</li> </ul>	<ul style="list-style-type: none"> <li>Logging data and assay results are synchronized with the MX Deposit database hosted online by Seequent. Access to this database is limited to the Competent Person and Seequent staff who manage both the maintenance of the database and online security.</li> <li>All drill hole collars were surveyed using handheld GPS equipment. Coordinates are relative to MGA94. A down hole survey was taken at least every 30m in all drill holes by a Axis Champ Gyro electronic north seeking gyro by the drilling contractors.</li> </ul>
Data spacing and distribution	<ul style="list-style-type: none"> <li>Data spacing for reporting of Exploration Results.</li> <li>Whether the data spacing and distribution is sufficient to establish the degree of geological and grade continuity appropriate for the Mineral Resource and Ore Reserve estimation procedure(s) and classifications applied.</li> <li>Whether sample compositing has been applied.</li> </ul>	<ul style="list-style-type: none"> <li>Drill spacing is variable due to previous drilling around the project however the program is designed to bring the majority of the material to a 40mx40m minimum spacing on the plane of the mineralization.</li> <li>It has yet to be determined whether the mineralised domains have sufficient continuity in both geology and grade to be considered appropriate for the Mineral Resource and Ore Reserve estimation procedures and classification applied under the 2012 JORC Code, but the drill program is ongoing and the results of subsequent drilling will clarify this matter.</li> <li>Sample intervals are 1m. Reported intersections are then composited. Intersections in excess of 0.5 g/t Au are reported as significant and may include up to 2 samples below 0.5g/t Au as internal waste when compositing. Reported intervals are drill thicknesses, as true thicknesses are currently difficult to accurately calculate.</li> </ul>
Orientation of data in relation to	<ul style="list-style-type: none"> <li>Whether the orientation of sampling achieves unbiased sampling of possible structures and the extent to which this is known, considering the deposit type.</li> <li>If the relationship between the drilling orientation and the orientation of key mineralised structures is considered to have introduced a sampling bias,</li> </ul>	<ul style="list-style-type: none"> <li>Drilling sections are orientated perpendicular to the strike of the mineralised host rocks. The drilling is angled at 60 degrees, to allow for the preferred distance between intersections, and where possible is targeting zones approximately perpendicular to the dip of the lodes. Once again</li> </ul>

Criteria	JORC Code explanation	Commentary
geological structure	<i>this should be assessed and reported if material.</i>	<i>due to infrastructure from previous mining the location of collars and the dips of the holes aren't always ideal. • No orientation based sampling bias has been identified in the data</i>
Sample security	<ul style="list-style-type: none"> <li>The measures taken to ensure sample security.</li> </ul>	<ul style="list-style-type: none"> <li>The samples to be sent to Jinning Pty Ltd are couriered by McMahon Burnett, a nationally recognised courier transport company, who subsequently transport them to Maddington for sample analysis.</li> </ul>
Audits or reviews	<ul style="list-style-type: none"> <li>The results of any audits or reviews of sampling techniques and data.</li> </ul>	<ul style="list-style-type: none"> <li>The process of drilling, sample selection, sample bagging, and sample dispatch have all been reviewed by a Competent Person as defined by JORC.</li> <li>The database is available for review.</li> </ul>

## SECTION 2 REPORTING OF EXPLORATION RESULTS

(Criteria listed in the preceding section also apply to this section.)

Criteria	JORC Code explanation	Commentary
Mineral tenement and land tenure status	<ul style="list-style-type: none"> <li>Type, reference name/number, location and ownership including agreements or material issues with third parties such as joint ventures, partnerships, overriding royalties, native title interests, historical sites, wilderness or national park and environmental settings.</li> <li>The security of the tenure held at the time of reporting along with any known impediments to obtaining a licence to operate in the area.</li> </ul>	<ul style="list-style-type: none"> <li>The Alpha Project is situated on granted Mining Lease M38/1058. Brightstar Resources has a 100% interest in the tenement.</li> <li>The tenement is in good standing and no known impediments exist.</li> </ul>
Exploration done by other parties	<ul style="list-style-type: none"> <li>Acknowledgment and appraisal of exploration by other parties.</li> </ul>	<ul style="list-style-type: none"> <li>The tenement area has been previously explored by a number of other companies, and has been referenced in a number of Brightstar Resources news releases and independent technical reports. This program has been undertaken partially to confirm both location and tenor of previous intersections reported by previous operators of the project. However those details are not relevant to results reported in this announcement.</li> </ul>
Geology	<ul style="list-style-type: none"> <li>Deposit type, geological setting and style of mineralisation.</li> </ul>	<ul style="list-style-type: none"> <li>Yilgarn style structurally hosted Gold along a structure in mafic rock</li> </ul>
Drill hole Information	<ul style="list-style-type: none"> <li>A summary of all information material to the understanding of the exploration results including a tabulation of the following information for all Material drill holes: <ul style="list-style-type: none"> <li>easting and northing of the drill hole collar</li> <li>elevation or RL (Reduced Level – elevation above sea level in metres) of the drill hole collar</li> <li>dip and azimuth of the hole</li> <li>down hole length and interception depth</li> <li>hole length.</li> </ul> </li> <li>If the exclusion of this information is justified on the basis that the information is not Material and this exclusion does not detract from the understanding of the report, the Competent Person should clearly explain why this is the case.</li> </ul>	<ul style="list-style-type: none"> <li>All drill hole details reported in this announcement include: - easting and northing of drill hole collar, elevation, dip and azimuth of hole, hole length, downhole length, and interception depth.</li> </ul>
Data aggregation methods	<ul style="list-style-type: none"> <li>In reporting Exploration Results, weighting averaging techniques, maximum and/or minimum grade truncations (eg cutting of high grades) and cut-off grades are usually Material and should be stated.</li> <li>Where aggregate intercepts incorporate short lengths of high grade results and longer lengths of low grade results, the procedure used for such aggregation should be stated and some typical examples of such aggregations should be shown in detail.</li> <li>The assumptions used for any reporting of metal equivalent values should be clearly stated.</li> </ul>	<ul style="list-style-type: none"> <li>All reported assays have been length weighted if appropriate. No top cuts have been applied. A nominal 0.5 g/t Au lower cut off has been applied. • High grade gold (Au) intervals lying within broader zones of Au mineralisation are reported as included intervals. In calculating the zones of mineralization, internal dilution has been allowed.</li> </ul>

Criteria	JORC Code explanation	Commentary
<i>Relationship between mineralisation widths and intercept lengths</i>	<ul style="list-style-type: none"> <li>These relationships are particularly important in the reporting of Exploration Results.</li> <li>If the geometry of the mineralisation with respect to the drill hole angle is known, its nature should be reported.</li> <li>If it is not known and only the down hole lengths are reported, there should be a clear statement to this effect (eg 'down hole length, true width not known').</li> </ul>	<ul style="list-style-type: none"> <li>Drill azimuth and dips are such that intersections are orthogonal to the expected orientation of mineralization.</li> </ul>
<i>Diagrams</i>	<ul style="list-style-type: none"> <li>Appropriate maps and sections (with scales) and tabulations of intercepts should be included for any significant discovery being reported. These should include, but not be limited to a plan view of drill hole collar locations and appropriate sectional views.</li> </ul>	<ul style="list-style-type: none"> <li>Diagrams and Maps/Sections have been included where useful.</li> </ul>
<i>Balanced reporting</i>	<ul style="list-style-type: none"> <li>Where comprehensive reporting of all Exploration Results is not practicable, representative reporting of both low and high grades and/or widths should be practiced to avoid misleading reporting of Exploration Results.</li> </ul>	<ul style="list-style-type: none"> <li>All results received to date are reported in table included within the announcement</li> </ul>
<i>Other substantive exploration data</i>	<ul style="list-style-type: none"> <li>Other exploration data, if meaningful and material, should be reported including (but not limited to): geological observations; geophysical survey results; geochemical survey results; bulk samples – size and method of treatment; metallurgical test results; bulk density, groundwater, geotechnical and rock characteristics; potential deleterious or contaminating substances.</li> </ul>	<ul style="list-style-type: none"> <li>No other substantive exploration data relative to these results are available for this area.</li> </ul>
<i>Further work</i>	<ul style="list-style-type: none"> <li>The nature and scale of planned further work (eg tests for lateral extensions or depth extensions or large-scale step-out drilling).</li> <li>Diagrams clearly highlighting the areas of possible extensions, including the main geological interpretations and future drilling areas, provided this information is not commercially sensitive.</li> </ul>	<ul style="list-style-type: none"> <li>Follow up diamond drilling is anticipated to provide more comprehensive geotechnical and metallurgical datasets for the gold project.</li> <li>Further RC drilling will also be necessary to follow up extensions of the mineralisation. Interpretation of current drillholes is needed to determine appropriate drill design for next phase.</li> </ul>

### SECTION 3 ESTIMATION AND REPORTING OF MINERAL RESOURCES

(Criteria listed in section 1, and where relevant in section 2, also apply to this section.)

Criteria	JORC Code explanation	Commentary
<i>Database integrity</i>	<ul style="list-style-type: none"> <li>Measures taken to ensure that data has not been corrupted by, for example, transcription or keying errors, between its initial collection and its use for Mineral Resource estimation purposes.</li> <li>Data validation procedures used.</li> </ul>	<ul style="list-style-type: none"> <li>Logging and analytical results do not require transcription as logging is undertaken directly into a tablet with logging app that then synchronises directly to database online. Assay jobs are returned as csv files from the lab which are then uploaded directly to the database via MX Deposit interface in browser</li> </ul>
<i>Site visits</i>	<ul style="list-style-type: none"> <li>Comment on any site visits undertaken by the Competent Person and the outcome of those visits.</li> <li>If no site visits have been undertaken indicate why this is the case.</li> </ul>	<ul style="list-style-type: none"> <li>Competent Person has been onsite during drilling program and has been responsible for all quality control and quality assurance during that period.</li> </ul>
<i>Geological interpretation</i>	<ul style="list-style-type: none"> <li>Confidence in (or conversely, the uncertainty of ) the geological interpretation of the mineral deposit.</li> <li>Nature of the data used and of any assumptions made.</li> <li>The effect, if any, of alternative interpretations on Mineral Resource estimation.</li> <li>The use of geology in guiding and controlling Mineral Resource estimation.</li> <li>The factors affecting continuity both of grade and geology.</li> </ul>	<ul style="list-style-type: none"> <li>Geological interpretation from previous operators appears to be robust. Drilling in this program has shown that modelled interpretation is robust with only minor changes likely to be required for extensions and slight changes in down dip positions of lodes.</li> </ul>
<i>Dimensions</i>	<ul style="list-style-type: none"> <li>The extent and variability of the Mineral Resource expressed as length (along strike or otherwise), plan width, and depth below surface to the upper and lower limits of the Mineral Resource.</li> </ul>	<ul style="list-style-type: none"> <li>The deposit is evident over approximately 1.2km of strike length and down dip approximately 100m. Width of mineralization varies along strike and down dip with pinch and swell morphology evident. Anomalous intersections are not closed</li> </ul>



Criteria	JORC Code explanation	Commentary
		off down dip or along strike at this time.
<b>Estimation and modelling techniques</b>	<ul style="list-style-type: none"> <li>The nature and appropriateness of the estimation technique(s) applied and key assumptions, including treatment of extreme grade values, domaining, interpolation parameters and maximum distance of extrapolation from data points. If a computer assisted estimation method was chosen include a description of computer software and parameters used.</li> <li>The availability of check estimates, previous estimates and/or mine production records and whether the Mineral Resource estimate takes appropriate account of such data.</li> <li>The assumptions made regarding recovery of by-products.</li> <li>Estimation of deleterious elements or other non-grade variables of economic significance (eg sulphur for acid mine drainage characterisation).</li> <li>In the case of block model interpolation, the block size in relation to the average sample spacing and the search employed.</li> <li>Any assumptions behind modelling of selective mining units.</li> <li>Any assumptions about correlation between variables.</li> <li>Description of how the geological interpretation was used to control the resource estimates.</li> <li>Discussion of basis for using or not using grade cutting or capping.</li> <li>The process of validation, the checking process used, the comparison of model data to drill hole data, and use of reconciliation data if available.</li> </ul>	<ul style="list-style-type: none"> <li>Details not applicable to reporting of exploration results</li> <li>ICP multi-element geochemical data is collected for every 20<sup>th</sup> sample assayed by Jinning Laboratory. To date, there does not appear to be any significant deleterious elements.</li> </ul>
<b>Moisture</b>	<ul style="list-style-type: none"> <li>Whether the tonnages are estimated on a dry basis or with natural moisture, and the method of determination of the moisture content.</li> </ul>	<ul style="list-style-type: none"> <li>Details not applicable to reporting of exploration results</li> </ul>
<b>Cut-off parameters</b>	<ul style="list-style-type: none"> <li>The basis of the adopted cut-off grade(s) or quality parameters applied.</li> </ul>	<ul style="list-style-type: none"> <li>Details not applicable to reporting of exploration results</li> </ul>
<b>Mining factors or assumptions</b>	<ul style="list-style-type: none"> <li>Assumptions made regarding possible mining methods, minimum mining dimensions and internal (or, if applicable, external) mining dilution. It is always necessary as part of the process of determining reasonable prospects for eventual economic extraction to consider potential mining methods, but the assumptions made regarding mining methods and parameters when estimating Mineral Resources may not always be rigorous. Where this is the case, this should be reported with an explanation of the basis of the mining assumptions made.</li> </ul>	<ul style="list-style-type: none"> <li>Details not applicable to reporting of exploration results</li> </ul>
<b>Metallurgical factors or assumptions</b>	<ul style="list-style-type: none"> <li>The basis for assumptions or predictions regarding metallurgical amenability. It is always necessary as part of the process of determining reasonable prospects for eventual economic extraction to consider potential metallurgical methods, but the assumptions regarding metallurgical treatment processes and parameters made when reporting Mineral Resources may not always be rigorous. Where this is the case, this should be reported with an explanation of the basis of the metallurgical assumptions made.</li> </ul>	<ul style="list-style-type: none"> <li>Details not applicable to reporting of exploration results</li> </ul>
<b>Environmental factors or assumptions</b>	<ul style="list-style-type: none"> <li>Assumptions made regarding possible waste and process residue disposal options. It is always necessary as part of the process of determining reasonable prospects for eventual economic extraction to consider the potential environmental impacts of the mining and processing operation. While at this stage the determination of potential environmental impacts, particularly for a greenfields project, may not always be well advanced, the status of early consideration of these potential environmental impacts should be reported. Where these aspects have not been considered this should be reported with an explanation of the environmental assumptions made.</li> </ul>	<ul style="list-style-type: none"> <li>Details not applicable to reporting of exploration results</li> </ul>
<b>Bulk density</b>	<ul style="list-style-type: none"> <li>Whether assumed or determined. If assumed, the basis for the assumptions. If determined, the method used, whether wet or dry, the frequency of the measurements, the nature, size and representativeness of the samples.</li> <li>The bulk density for bulk material must have been measured by methods that adequately account for void spaces (vugs, porosity, etc), moisture and differences between rock and alteration zones within the deposit.</li> <li>Discuss assumptions for bulk density estimates used in the evaluation</li> </ul>	<ul style="list-style-type: none"> <li>Details not applicable to reporting of exploration results</li> </ul>

Criteria	JORC Code explanation	Commentary
	<i>process of the different materials.</i>	
<b>Classification</b>	<ul style="list-style-type: none"> <li><i>The basis for the classification of the Mineral Resources into varying confidence categories.</i></li> <li><i>Whether appropriate account has been taken of all relevant factors (ie relative confidence in tonnage/grade estimations, reliability of input data, confidence in continuity of geology and metal values, quality, quantity and distribution of the data).</i></li> <li><i>Whether the result appropriately reflects the Competent Person's view of the deposit.</i></li> </ul>	<ul style="list-style-type: none"> <li><i>Details not applicable to reporting of exploration results</i></li> </ul>
<b>Audits or reviews</b>	<ul style="list-style-type: none"> <li><i>The results of any audits or reviews of Mineral Resource estimates.</i></li> </ul>	<ul style="list-style-type: none"> <li><i>Details not applicable to reporting of exploration results</i></li> </ul>
<b>Discussion of relative accuracy/confidence</b>	<ul style="list-style-type: none"> <li><i>Where appropriate a statement of the relative accuracy and confidence level in the Mineral Resource estimate using an approach or procedure deemed appropriate by the Competent Person. For example, the application of statistical or geostatistical procedures to quantify the relative accuracy of the resource within stated confidence limits, or, if such an approach is not deemed appropriate, a qualitative discussion of the factors that could affect the relative accuracy and confidence of the estimate.</i></li> <li><i>The statement should specify whether it relates to global or local estimates, and, if local, state the relevant tonnages, which should be relevant to technical and economic evaluation. Documentation should include assumptions made and the procedures used.</i></li> <li><i>These statements of relative accuracy and confidence of the estimate should be compared with production data, where available.</i></li> </ul>	<ul style="list-style-type: none"> <li><i>Details not applicable to reporting of exploration results</i></li> </ul>